

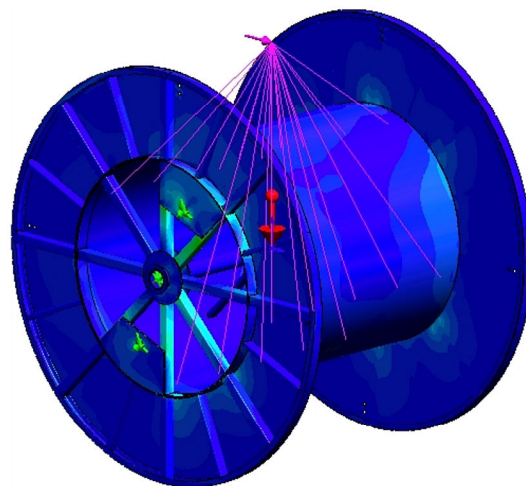
REELS & DRUMS



Our metallic reels and drums are available in a wide range of flange/drum diameters and internal lengths, and are manufactured according to existing DIN standards (e.g. DIN 46391) or to the clients own bespoke requirements.

All products are manufactured from high quality, certified materials and are MIG welded with all welds conforming to EN 22553. Our in-house design team develops innovative and cost effective reels and drums testing them on stress analysis software.

Depending on customer requirements the reels can be manufactured in different materials (like carbon steel, stainless steel or other types of steel) and finished in different grades (painted, galvanized, etc...).

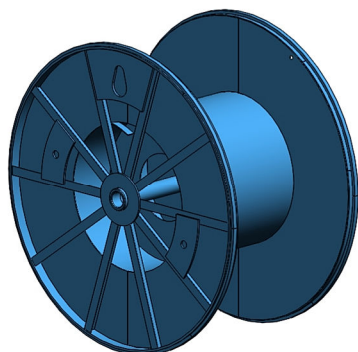


Steel Process & Shipping Reels

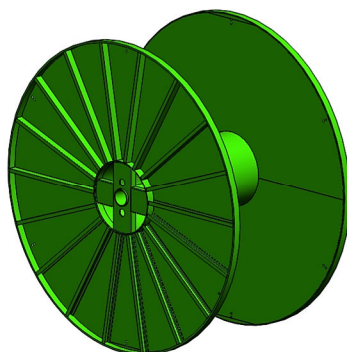
Our team designs and manufactures a wide range of shipping and process reels tailored to suit our customers individual requirements.

The reels can be constructed in various frange diameters and can be designed in accordance with existing standards or special designs, complete with stress calculations if necessary.

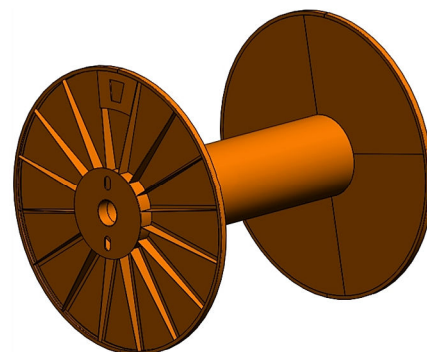
In the development stage we take into consideration the applications, lifting methods, surface finishes and any size constraints imposed by the customers machinery.



Ø2000x1000

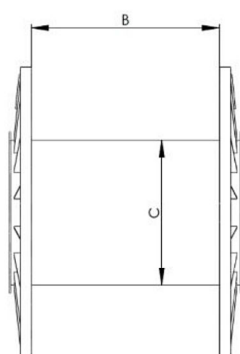
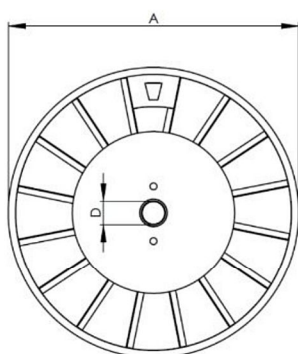


Ø2500x1150



Ø3500x3400

Sample dimensions:



A [mm]	B [mm]	C [mm]	Capacidade [t]
660	600	350	0,5
1000	660	500	1,5
1700	1100	850	7,5
2100	1400	1050	14
2200	1470	1100	
2300	1540	1150	
2400	1600	1200	20
2800	2700	1000	
3300	3000	1000	18
3500	3500		
	3900		
	4000		
	4200		
3800	4300	1100	21
	4800		
	4250		
	4500		
	4700		
4000	4700		28



Construction:

- Durable tubular steel flanges and drum
- Lightweight due to open sides
- Flat bar or beam rims
- Made with quality steel sheet and bars
- Finished with grade C2 paint

Ideal for:

- Power transmission, control and distribution
- Telecommunications (wired, cable, etc...)
- Oil, gas and marine products
- Infrastructure (wire rope, cable, conduit)
- Elevator cables

Accessories:

- Support cradle



Rua Eng.º Frederico Ulrich, 2650
4470-605 Maia
PORTUGAL

Tel: +351 220 915 405
Fax: +351 229 428 245
E-mail: ferrumplus@ferrumplus.pt